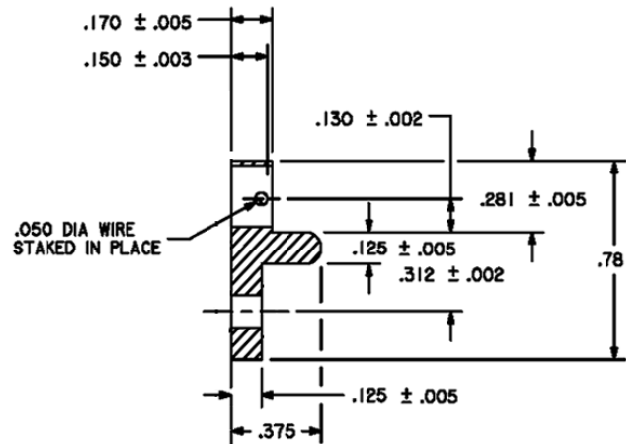
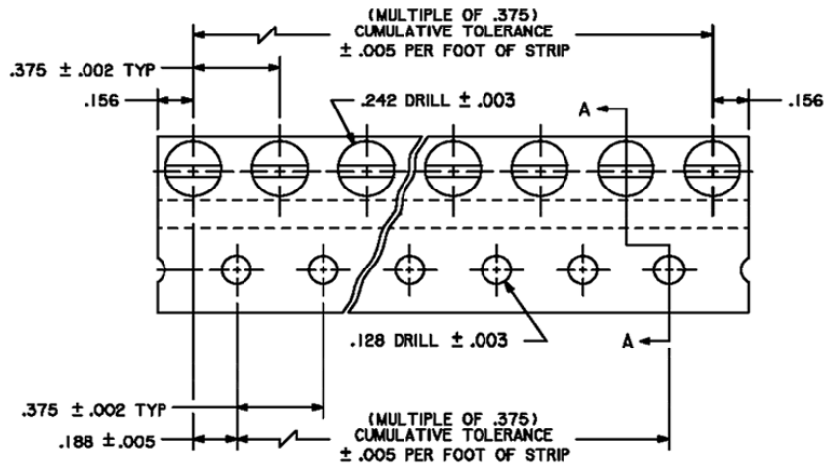


STROCO

Exceeding Your Expectations



SECTION A-A

Material: Wire: 0.050 diameter 316 stainless steel wire, Condition B, spring temper
 Receptacle: 6061-T6 Aluminum alloy in accordance with AMS-QQ-A-200/8.

Finish: Wire: None
 Strip: None

Quality Conformance Inspection: MIL-F-25173

DIMENSIONS IN INCHES: TOLERANCES UNLESS OTHERWISE SPECIFIED: X.XX ± 0.03; X.XXX ± 0.010; ANGLES ± 0.5°
 DOCUMENT AND ITS CONTENTS ARE PROPRIETARY INFORMATION TO STROCO AND ITS AFFILIATES. USE WITHOUT AUTHORIZATION IS PROHIBITED.

CAGE NO. 19904	TITLE RECEPTACLE – TURNLOCK FASTENER, EDGE MOUNTING STRIP	PART NUMBER S2700-XXX <small>XXX= Number of receptacle holes</small>
		REV A 04/01/05