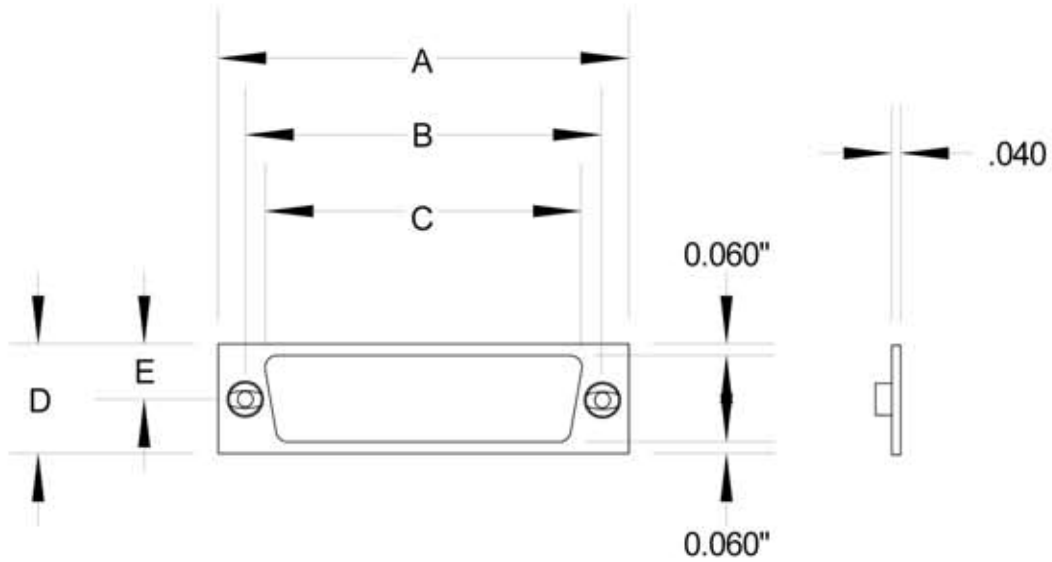


STROCO

Exceeding Your Expectations



| PART NUMBER | SHELL SIZE | T THR'D UNCJ-3B | D = 2 X E | | | | |
|-------------|------------|-----------------|------------|------------|------------|------------|------------|
| | | | A +/- .010 | B +/- .003 | C +/- .010 | D +/- .010 | E +/- .005 |
| SMD-9 | 9 | 2-56 | 0.775 | 0.565 | 0.390 | 0.298 | 0.149 |
| SMD-15 | 15 | 2-56 | 0.925 | 0.715 | 0.540 | 0.298 | 0.149 |
| SMD-21 | 21 | 2-56 | 1.075 | 0.865 | 0.690 | 0.298 | 0.149 |
| SMD-25 | 25 | 2-56 | 1.175 | 0.965 | 0.790 | 0.298 | 0.149 |
| SMD-31 | 31 | 2-56 | 1.325 | 1.115 | 0.930 | 0.298 | 0.149 |
| SMD-37 | 37 | 2-56 | 1.475 | 1.265 | 1.090 | 0.298 | 0.149 |
| SMD-51 | 51 | 2-56 | 1.425 | 1.215 | 1.040 | 0.341 | 0.017 |
| SMD-100 | 100 | 4-40 | 2.160 | 1.800 | 1.432 | 0.384 | 0.192 |

Specifications

MATERIAL: Retainer- Aluminum alloy, 2024-T3 or 6061-T6, .040" (+.003/ -.003) thickness
 Nut- Self-Locking, clinch type, corrosion resistant alloy steel per AMS5640 (type 303)
 Performance per MIL-N-25027

FINISH: Retainer-Alodine per MIL-C-5541
 Nut- Per MIL-N-45938 Dry Film Lube applied per MIL-L-46010