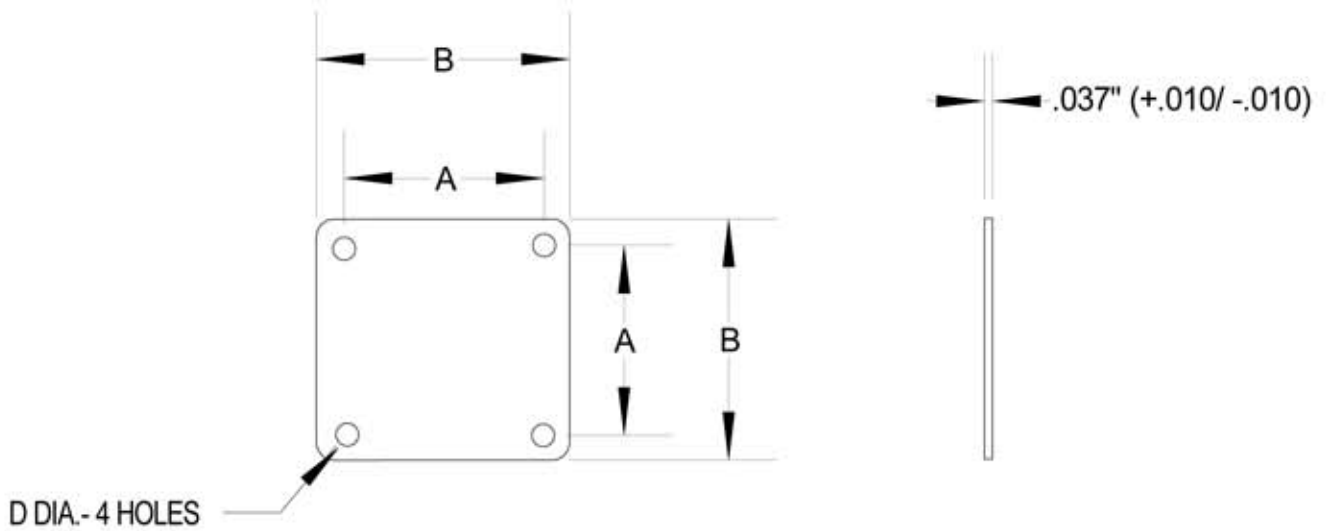


# STROCO

Exceeding Your Expectations



STROCO P/N	SHELL SIZE	"A" (+/- .005)	"B" (+/- .030)	"D" (+/- .005)
S321-8	8	0.594	0.875	0.120
S321-10	10	0.719	1.000	0.120
S321-12	12	0.812	1.094	0.120
S321-14	14	0.906	1.188	0.120
S321-16	16	0.969	1.281	0.120
S321-18	18	1.062	1.375	0.120
S321-20	20	1.156	1.500	0.120
S321-22	22	1.250	1.625	0.120
S321-24	24	1.375	1.750	0.147
S321-28	28	1.562	2.000	0.147
S321-32	32	1.750	2.250	0.173
S321-36	36	1.938	2.500	0.173
S321-40	40	2.188	2.750	0.173
S321-44	44	2.375	3.000	0.173
S321-48	48	2.625	3.250	0.173

## Specifications

**MATERIAL:** Retainer- Aluminum alloy, 2024-T3 or 6061-T6, .037" (+.010/ -.010) thickness

**FINISH:** Retainer-Alodine per MIL-C-5541  
Epoxy Polyamide primer applied per MIL-P-23377 is optional (see ordering information)